

# Social mobility: Turning the tide

Overview & Scrutiny Board

22 April 2026

# A portrait of Torbay

- Indices of deprivation 2025

# How is deprivation measured?

- The English Indices of Multiple Deprivation are commissioned by the Ministry of Housing, Communities and Local Government
- They measure **relative** levels of deprivation across England
- They measure small areas called Lower-layer Super Output Areas (LSOAs), containing approximately 1,500 residents
- Each LSOA is ranked for deprivation and placed in a decile from 1 to 10 (1 is the most deprived)
- 2025 is the 7th iteration and new methodologies, geographies and datasets have been used meaning it is not directly comparable to previous iterations

# The deprivation domains

- The English IMD 2025 consist of 7 domains (% shows the weighting)

**Income (22.5%)**

**Employment (22.5%)**

**Education, Skills and Training (13.5%)**

**Health Deprivation and Disability (13.5%)**

**Crime (9.3%)**

**Barriers to Housing and Services (9.3%)**

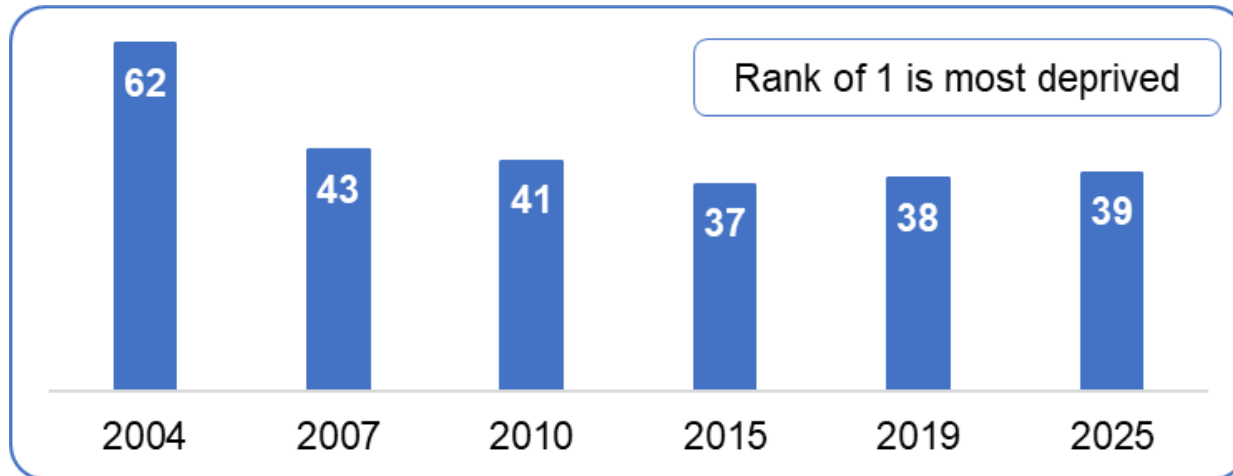
**Living Environment (9.3%)**

- The Income domain contains 2 supplementary indices-

**Income Deprivation Affecting Children**

**Income Deprivation Affecting Older People**

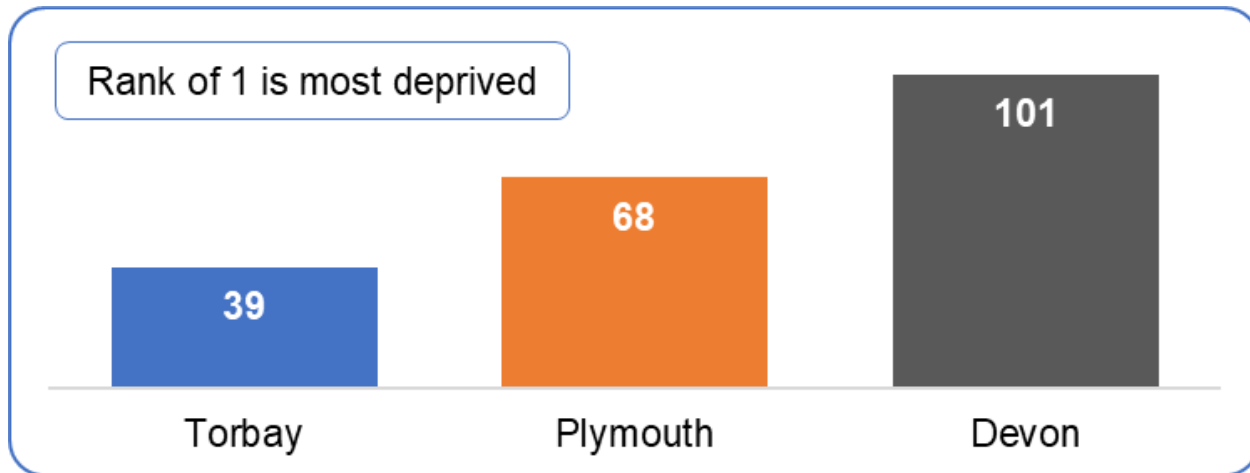
# Rank amongst upper tier local authorities



At LA level the 'rank' is an average of all the LSOA ranks within that area.

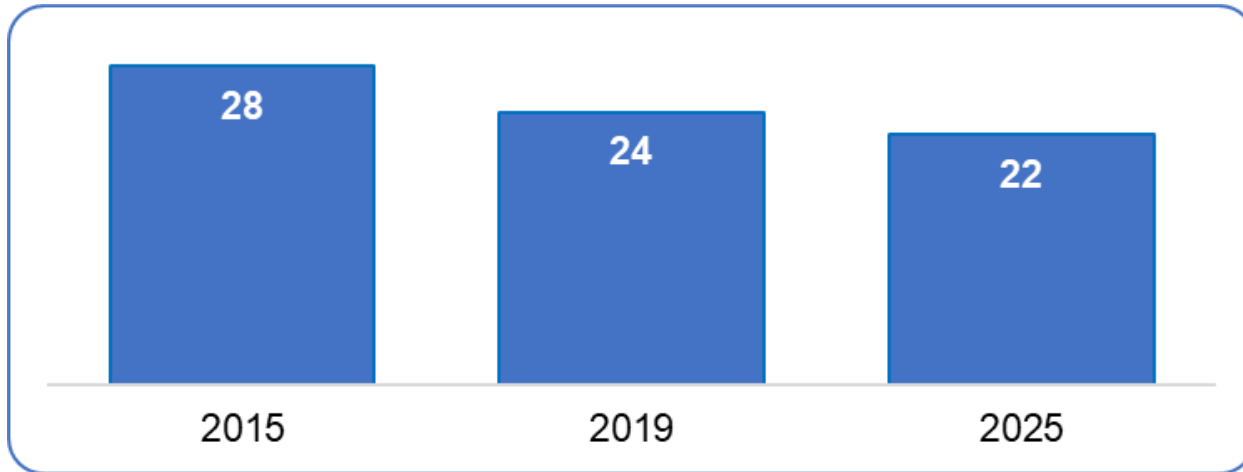
- **Torbay is ranked as the 39<sup>th</sup> most deprived upper tier local authority (LA) out of 153**
- Torbay has had virtually the same rank for a number of IMD iterations
- In 2025 there were 153 upper tier LAs; during 2004 – 2019 there ranged between 149 and 152
- The IMD has been modified over time which means results are not directly comparable

# Rank amongst South West local authorities



- **Torbay is ranked as the most deprived upper tier LA in the South West out of 15 LAs (since 2007)**
- Torbay has a more deprived ranking than the other upper tier LAs in Devon

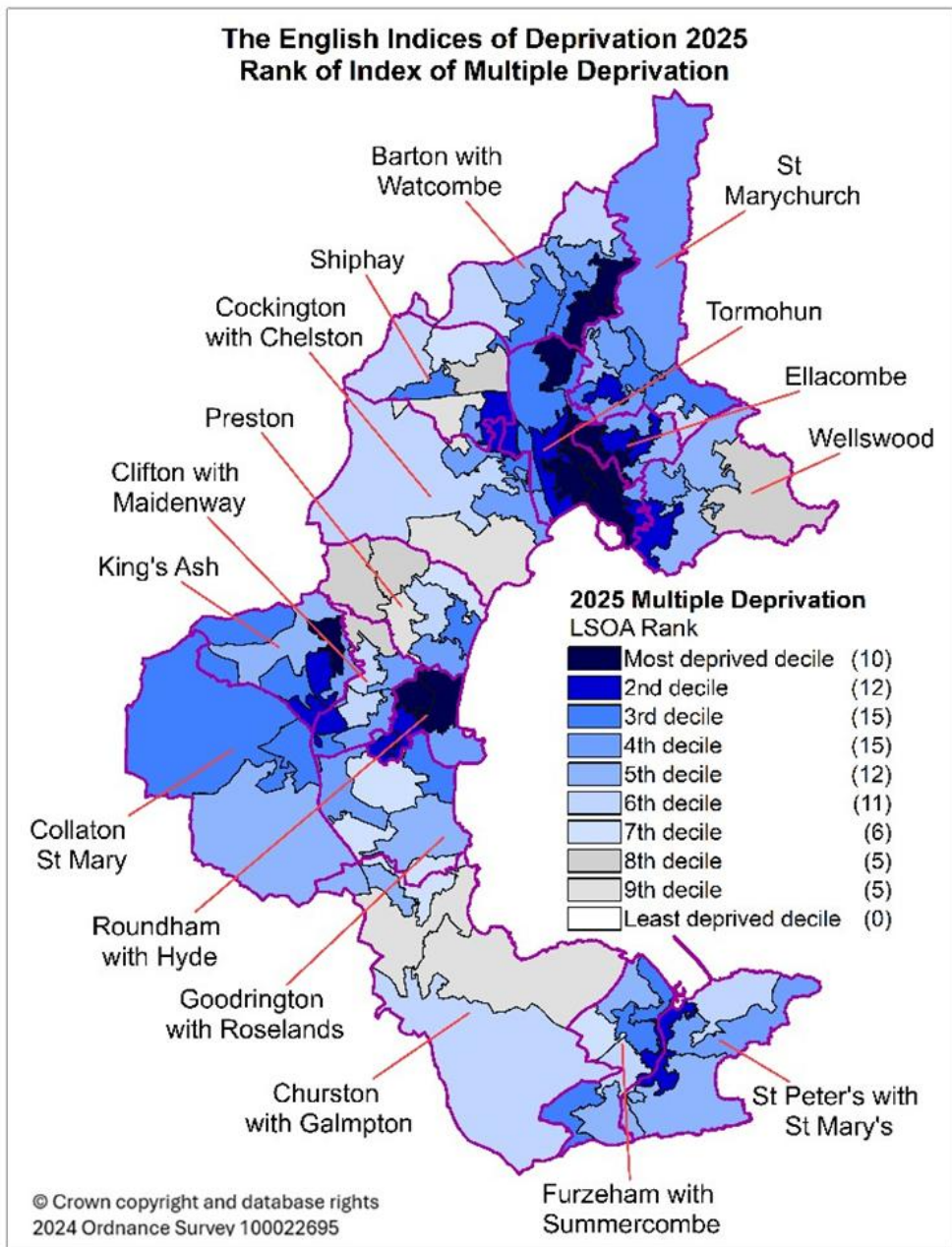
# Deprivation within Torbay (IMD 2025)



Number of Torbay LSOAs within the 20% most deprived areas in England

- **22 of Torbay's 91 LSOAs** are ranked as within the **20% most deprived areas in England**
- **26% of Torbay's population** is living within these 22 LSOAs (using ONS population estimates)
- This is **relative deprivation** so compares to the deprivation levels of other areas in England at the time

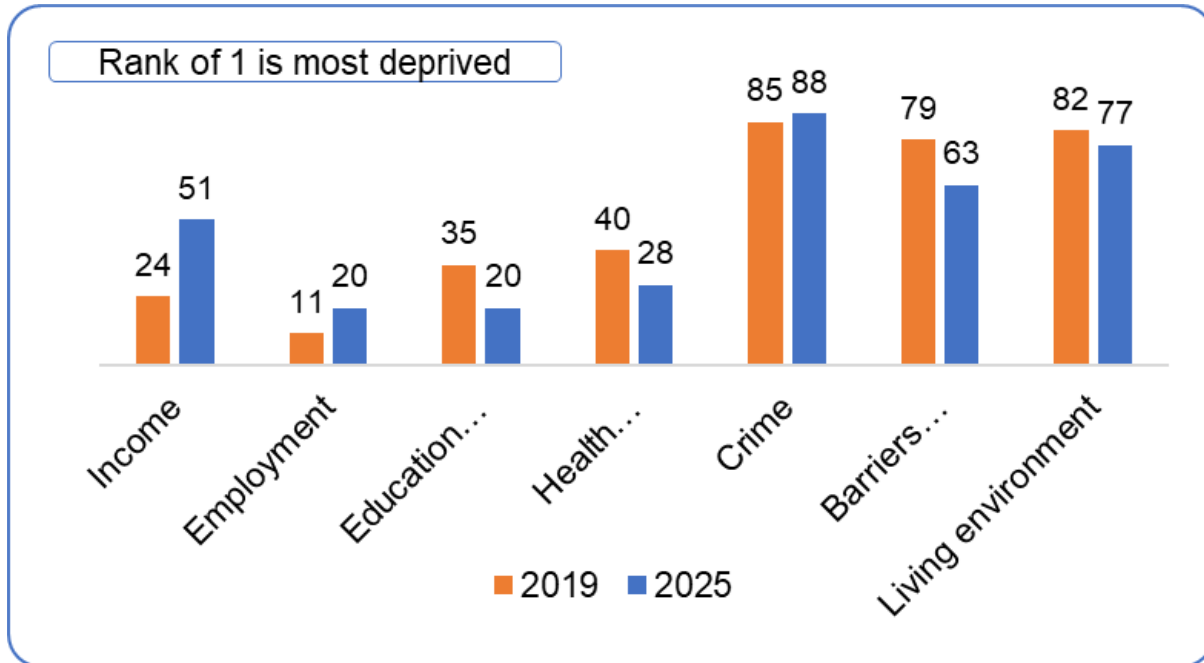
# Map showing Index of Multiple Deprivation rank of LSOAs in Torbay, 2025



## Greatest deprivation areas

The most deprived areas are mainly in central areas of Torquay, Paignton and Brixham, and within Barton with Watcombe and King's Ash wards

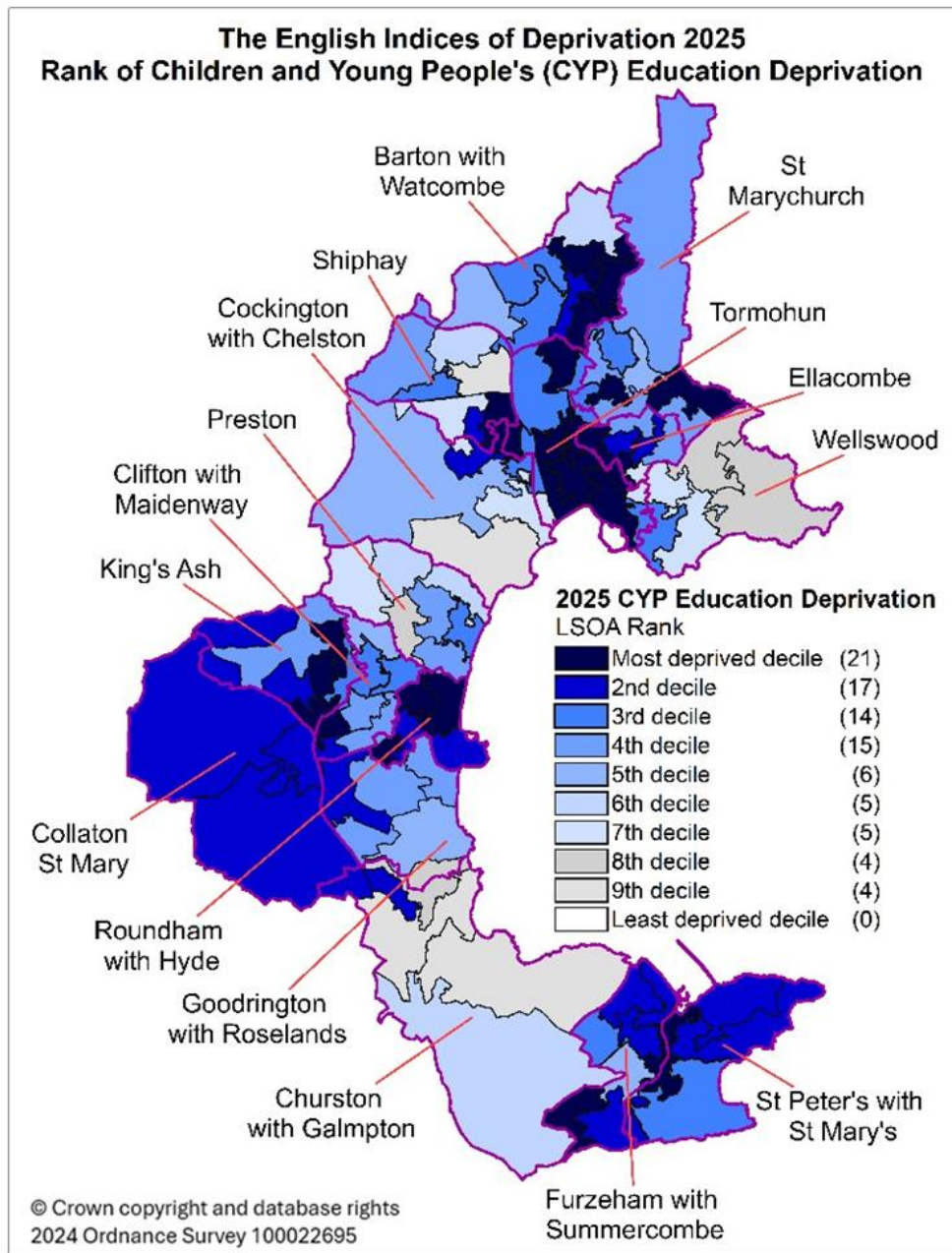
# Rank within the 7 deprivation domains (IMD 2025)



- **Employment, Education, Skills and Training domains have the most deprived ranks (lower number is 'worse')**
- **Changes in rank between the years do not necessarily mean changes in actual deprivation levels as ranks are relative to other geographical areas and the 2025 Indices of Deprivation have been updated and modified**

Torbay's rank of relative deprivation amongst upper tier local authorities – 2019 and 2025

## Children and Young People's Education Deprivation sub domain: Map showing rank of LSOAs, Torbay, 2025

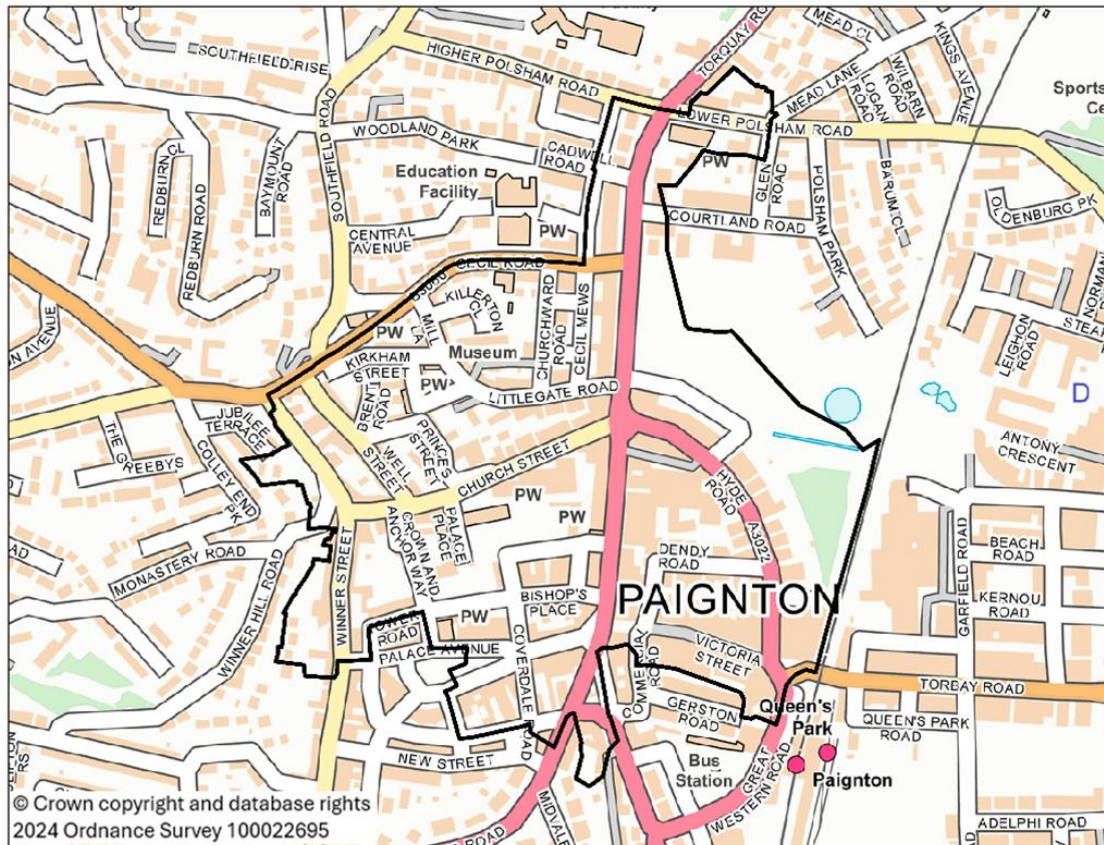


## Children and Young People Education sub domain

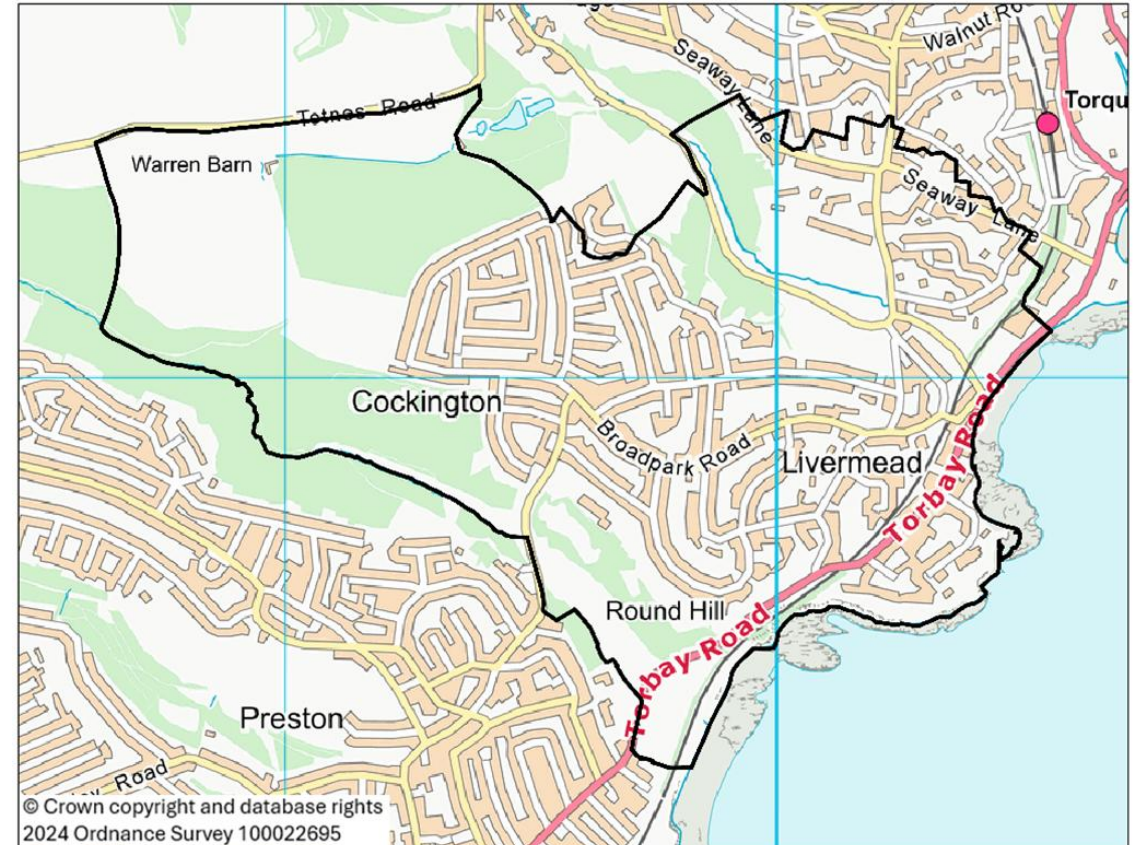
- This measures **qualification attainment, entry to higher education and pupil absence**. Almost half of the measure relates to pupil absence
- **Well over a third of Torbay's LSOAs, 38 out of 91, are ranked within the 20% most deprived areas in England**

# Most and least deprived LSOAs in Torbay

Most deprived- central Paignton



Least deprived- Livermead and Cockington



# What is social mobility?

*A person experiences social mobility when they have different life outcomes from their parents, for example in income, occupation, housing, education or wealth*

# Four challenges

- Low public confidence
- A younger generation doing less well than their parents, particularly in terms of pay, progression and housing
- Insufficient attention to regional disparities and 'left behind' people and places
- The need for more successful and cost effective interventions

# The gap starts early...

- The proportion of children achieving a 'good level of development' by the end of reception is 20% lower for those eligible for free school meals or living in the most deprived neighbourhoods
- Those with poor speech and language at age 5 are twice as likely to be unemployed at age 34, and 3 times more likely to have poor mental health in later life
- Young adults from a higher professional background are more than 4 times more likely to be in a higher professional occupation than those from a lower working-class background
- Those from higher professional backgrounds earn 13% more than those from a lower working-class background with the same qualification level

# Drivers

- Conditions of childhood – poverty, parental education & parental occupation
- Labour market opportunities for young people
- Innovation and growth – broadband, R&D expenditure, postgrad education

# Intervening for impact

- Transitions
  - Early years to primary school
  - Primary to secondary school
  - Secondary school to employment, training or higher education
  - Youth employment opportunities and support
- Targeting
  - Care experienced
  - Special educational needs and disabilities
  - Low income households

# Economic enablers

# Economic Growth and enabling social mobility

- Effective transitioning (into employment) requires a thriving economy
  - Encouraging aspiration
  - Access to training and pathway progression
  - Access to good, full-time, well-paid jobs
- Economic Strategy priorities
  - Supporting our bedrock sectors
  - Develop new (high value) opportunities
  - Enabling economic growth

# The role of UKSPF

- Provides significant revenue funding toward delivery of the Economic Growth Strategy (nearly £3M over 4 years)
- UKSPF has supported...
- Business growth – innovation, carbon reduction, start up, business tourism
- Skills development – NEET reduction, into employment, digital skills, sector pathway
- Community development – volunteering projects, tackling fuel poverty

# The impact of UKSPF

- Created new businesses
- Created new jobs
- Helped businesses to innovate and reduce their carbon footprint
- Grants given to support business growth
- Helped economically inactive people into work
- Help employed people to develop their skills and gain new qualifications
- Helped residents develop their digital skills
- Helped you excluded NEET's build confidence and feel part of our community

# The impact of UKSPF



# The impact of UKSPF

- In summary....
  - Funding ends end of this month!
  - There is currently no more revenue funding from govt to support these programmes
  - All projects will stop
- What you can do....
  - Lobby MP's, govt for future UKSPF
  - Pride in Place (PIP) funding is not the solution
  - When it comes to Council funding, consider economic growth alongside other council priorities

# Turning the Tide on Poverty in Torbay

- Objective: *breaking the cycle of poverty & promoting social mobility in Torbay*
- Priority group for action: *young people and families*
- Multi-agency partnership coming together to identify where combined effort is needed

<b>Vision</b>	<b>Breaking the cycle - promoting social mobility in Torbay</b>									
<b>We want to...</b>	Promote aspiration		Support young people out of benefits		Support people out of ill health into work			Build resilience		
<b>We will work with...</b>	Education		Businesses			Anchor institutions		Communities & places		
<b>Areas of activity</b>	Training – indivs & employers	Coaching & mentoring	Role models & peer support	Explore non-traditional jobs & roles	Disability confident employer	Transport (home/ work/ educ/ health/ social)	Apprenticeships	Health support & coaching	Housing support pathways	
<b>Target groups for extra help</b>	Care experienced	Carers	Homeless single males	Health conditions & disabilities	Neurodiverse, people with learning disability, mental illness	Neighbourhoods with greatest needs	People in Youth Justice pathways	NEETs		
<b>Settings</b>	Schools & Colleges	Family Hubs		Business forums & networks		Community groups & venues	NHS, GP practices			
<b>Mechanisms, Enablers, Levers</b>	Connect to Work & Workwell	Shared Prosperity Fund / Coastal Navigator Network		DfE 16-19 funding	Community wealthbuilding	Make it an LCP priority		Combined Authority (Adult Skills & Educ Fund; Transport; Housing)		
<b>Measures</b>	<b>Short term</b>	Work & skills (NEETs, DWP stats re work & health)		<b>Longer term</b>	Deprivation, economic, health & disability		<b>People &amp; community</b>	Wellbeing; resilience; connections; quality of life		

Action areas so far	Target group/s	Intervention
<b>Support into work</b>	<ul style="list-style-type: none"> <li>• Long time out of employment or never employed</li> <li>• Signed off with long term ill-health or disability</li> </ul>	<ul style="list-style-type: none"> <li>• Connect to Work programme</li> </ul> Plus: <ul style="list-style-type: none"> <li>• NHS support offer</li> <li>• VCSE support offer (farthest from employment)</li> </ul>
<b>Support for care experienced young people</b>	<ul style="list-style-type: none"> <li>• Care experienced young people experiencing or at risk of poverty</li> </ul>	<ul style="list-style-type: none"> <li>• Drop in support, budgeting advice and practical help</li> </ul>
<b>Disability confident employers</b>	<ul style="list-style-type: none"> <li>• Council initially</li> <li>• Anchor institutions &amp; wider businesses</li> </ul>	<ul style="list-style-type: none"> <li>• Promoting disability confident employers</li> </ul>
<b>Coastal Navigators Network</b>	<ul style="list-style-type: none"> <li>• Young people 14-16</li> </ul>	<ul style="list-style-type: none"> <li>• Pipeline from education to employment</li> </ul>

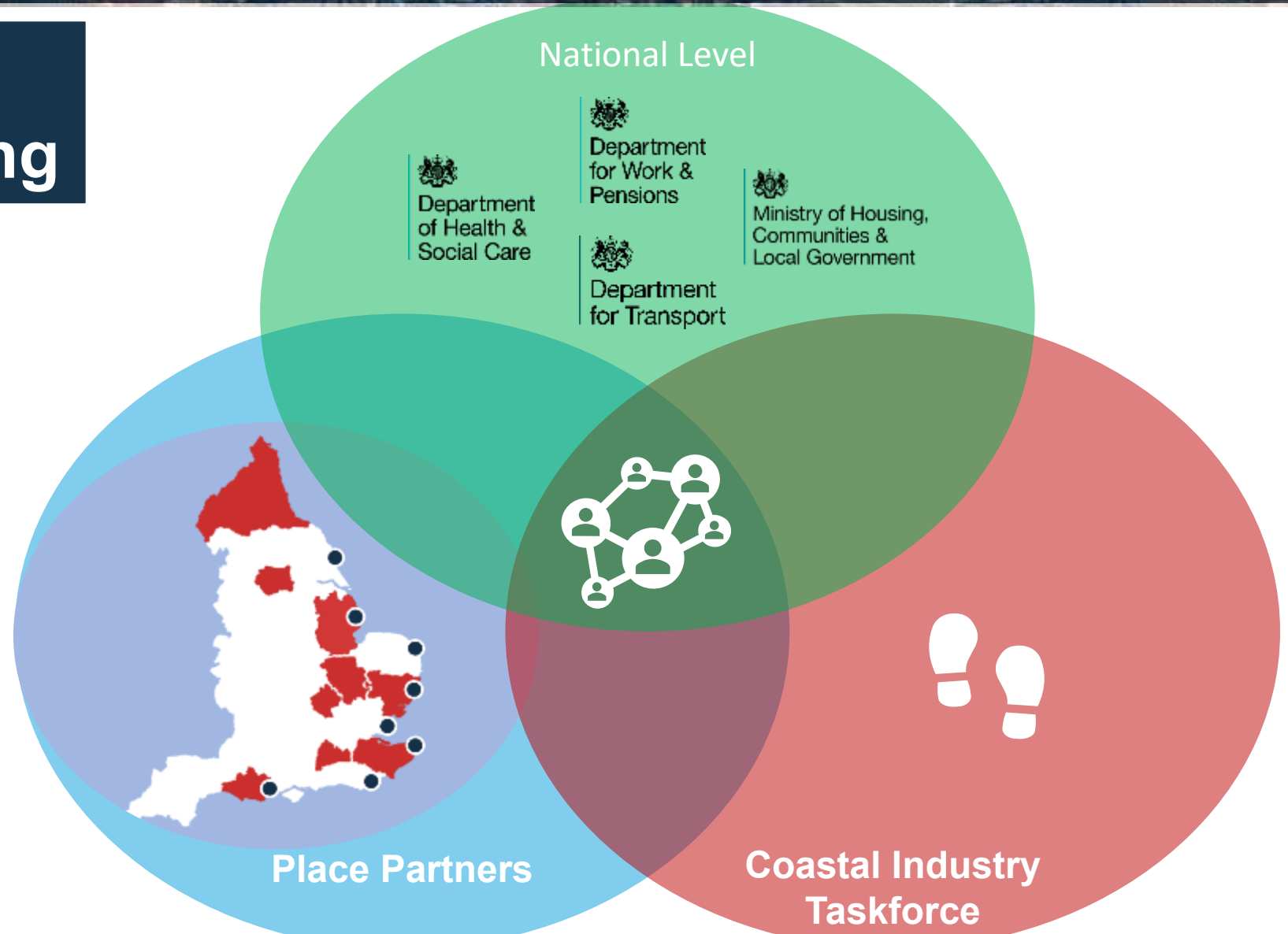


# Coastal Navigators' Network: Torquay

Liz Muir  
Torbay Communities

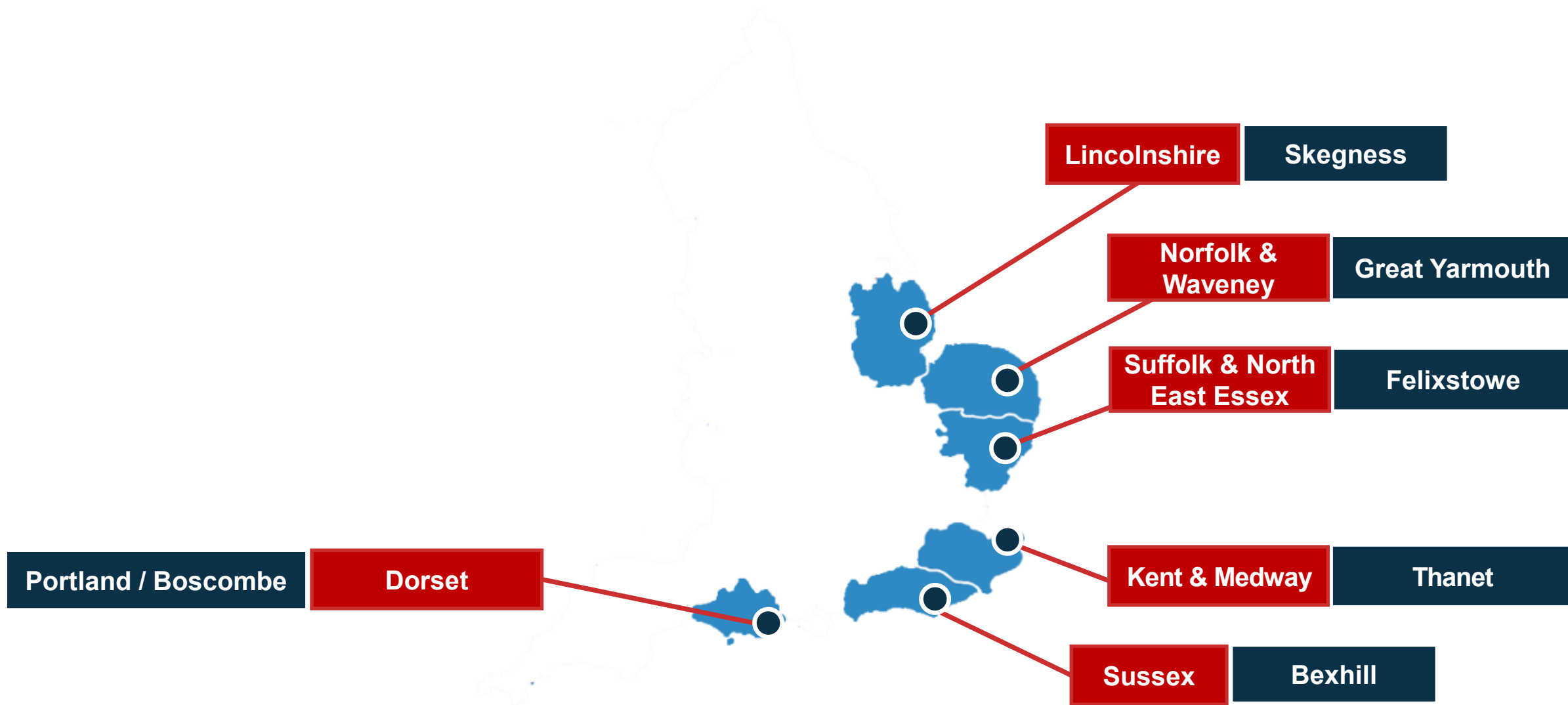
# The Coastal Navigators' Network

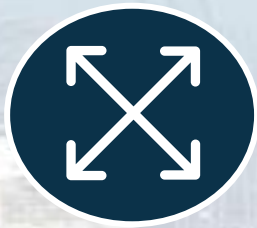
Co-Investment & Partnership Working



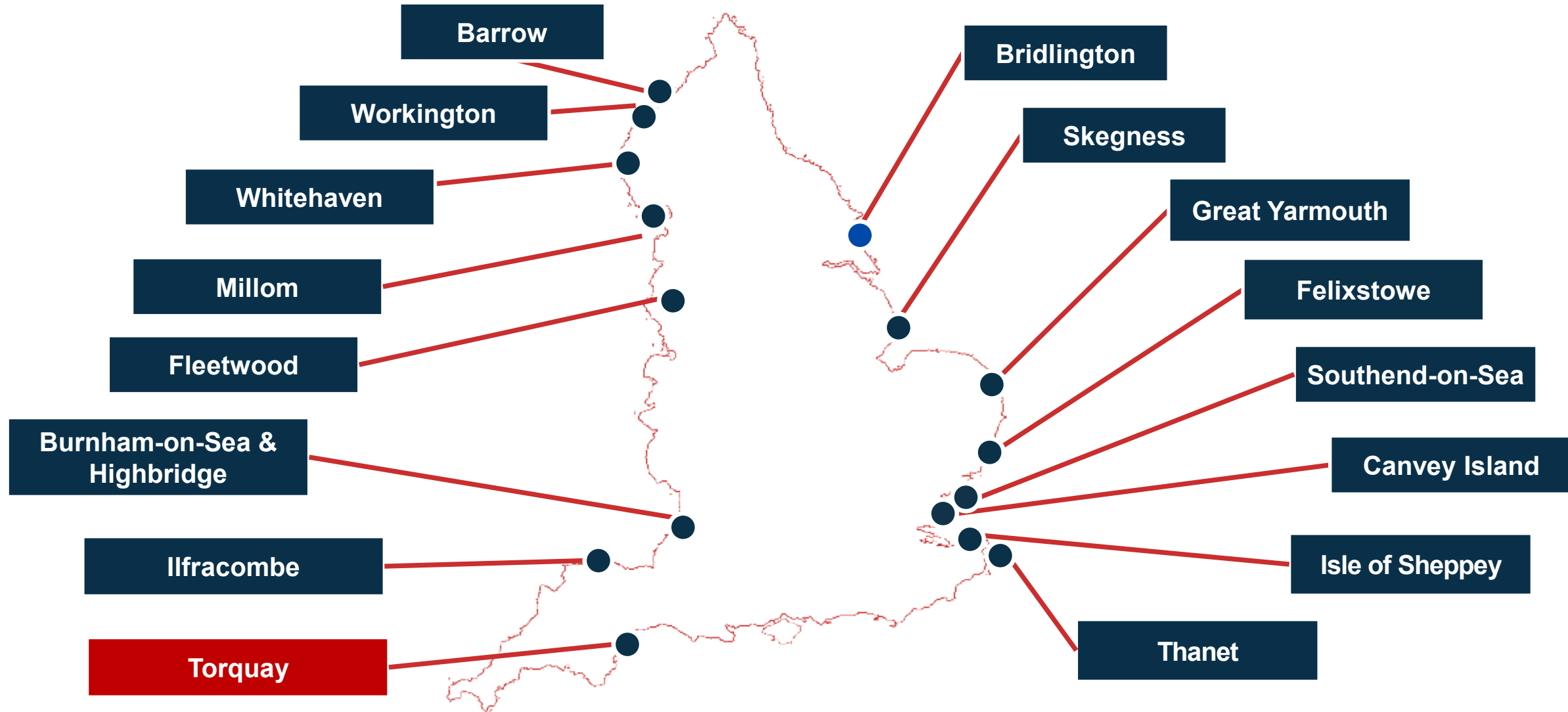


# Coastal Navigators' Network: Foundational Locations





# Coastal Navigators' Network Locations - Year Two



# Theme for Torquay

## NEET Prevention



*“14–16 year old kids are key, as once they hit 16 they are often lost to the system”*

*“They’re approaching that fork in the road of where their life will go. Is there more that can be done with the partnership to prevent that?”*

# First Action: Mapping NEET provision across Torquay





# Initial Findings

## The Energy

**Culture**  
(Emerging)

Cuthbert Mayne and Coombe  
Pafford

Doorstep Arts, Sound  
Communities, TASN, Powered  
By Youth

Active Devon, Busy Group

**Sport**  
(Opportunities)

# Key Stakeholders – In it together

South Devon College

Department for Work & Pensions

Schools

Voluntary and Community Sector

Entrepreneurs

Anchor Employers e.g. NHS, LA

Economic Development Team (Torbay Council)

Children's Services (Torbay Council)

**THANK YOU**

# Points for discussion

- What really makes the difference for social mobility for our young people?
- How confident are that our plans and strategies are addressing the drivers of social mobility?
- How can we best secure the legacy of the Shared Prosperity Fund projects?
- How can we lever current and future initiatives and investment opportunities, to drive social mobility in Torbay?